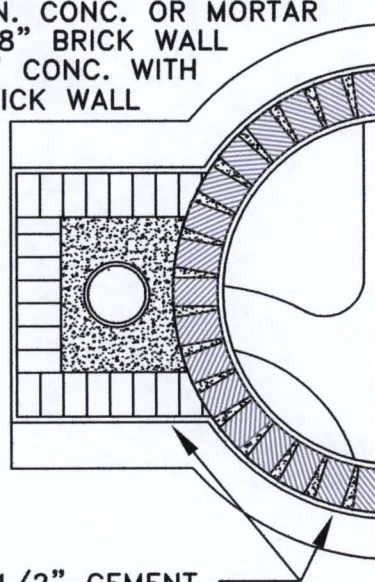


PLAN

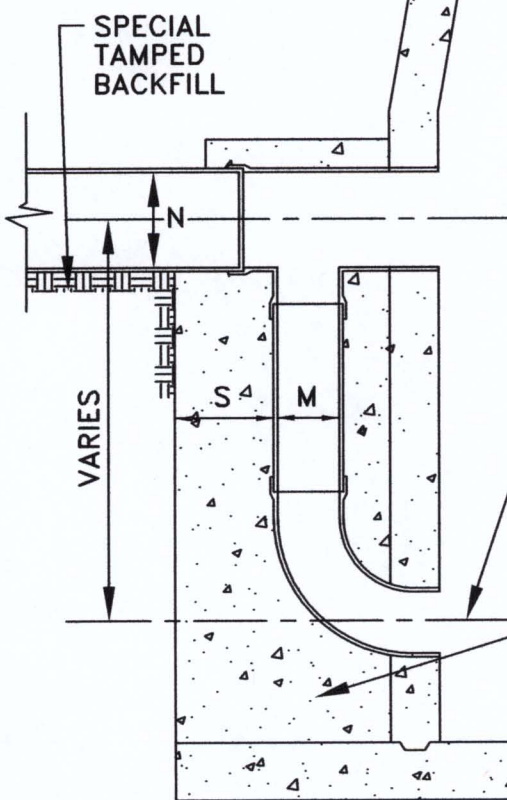
* 2" MIN. CONC. OR MORTAR
WITH 8" BRICK WALL
OR 6" CONC. WITH
4" BRICK WALL



1/2" CEMENT
MORTAR

TYPICAL SECTION
FOR BRICK ENCASEMENT

S = 8"
MINIMUM THICKNESS OF
CONCRETE ENCASEMENT ALL
AROUND PIPE



"M" = 8" WHERE "N" = 8" TO 18"
"M" = 12" WHERE "N" = 21" TO 30"

NOTE: ENCASEMENT AROUND DROP PIPE
ASSEMBLY MAY BE CONCRETE
OR BRICK SIMILAR TO DETAILS
SHOWN.

CENTERLINE OF DROP SEWER TO BE AT
SAME ELEVATION AS SPRING LINE OF
LARGEST MAIN LINE SEWER OR PROVIDE
MIN. OF 0.2 FT. INVERT DROP ACROSS M.H.

CLASS "A"
CONCRETE

TYPICAL SECTION FOR
CONCRETE ENCASEMENT

METRO WATER SERVICES

DROP PIPE ASSEMBLY
FOR STANDARD MANHOLES

NOT TO SCALE | DATE: 02/22/08

DWG. NO. SDET011

METRO
WATER SERVICES

Hal Balthrop
LICENSED COLLECTION OPERATOR

S. Voth
DIRECTOR OF WATER AND SEWERAGE SERVICES